

Noncredit Outcomes

Iowa Community College Noncredit Career and Technical Education (CTE) Programs
Academic Year 2017/2018

Programs Benefit Individuals, Employers and the State

The noncredit career and technical education (CTE) programs offered by Iowa's 15 community colleges provide targeted pathways that expedite the attainment of marketplace skills that benefit individuals, employers and the state.

These market-driven programs are highly responsive to regional workforce needs. They provide a starting point for individuals to acquire skills needed for high-demand job opportunities as well as satisfy continuing education units (CEUs) required of certain occupations. These programs also offer continuing education for individuals to stay current in their jobs, meet local employer needs with custom job training designed for workplace preparation and provide a pathway to further postsecondary education.

Student Demographics

As compared to credit-bearing students, noncredit CTE students at Iowa community colleges tend to be male, older and more racially diverse.



55.9% of noncredit students were male compared to **54.9%** of credit students.



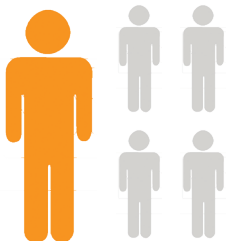
62.0% of noncredit students were 25 years or older compared to **28.8%** of credit students.



24.6% of noncredit students were of a racial or ethnic minority group compared to **23.1%** of credit students.

Continue Education

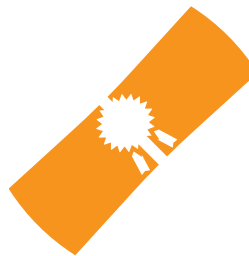
Noncredit CTE programs often lead to enrollment in credit programs, support credit students on their educational journey and help degree holders build and enhance current marketplace skills.



21.0% of noncredit students continue into credit-bearing programs.



Of those who continue into credit programs **85.0%** did so at an Iowa college or university.



4.6% of noncredit students hold previously earned postsecondary degrees.

Top 10 Noncredit Programs

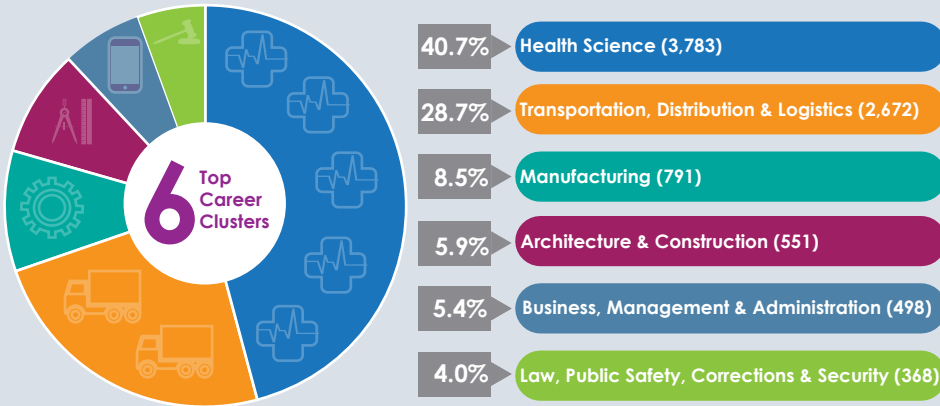


Health care and transportation programs comprise the highest noncredit CTE enrollments at Iowa community colleges.

1,088	Nursing Assistant/Aide
178	Commercial Vehicle Operator
138	Medication Aide
80	Emergency Medical Technology
49	Fire Sciences/Firefighting
43	Welding Technology
31	Electronics Equipment Installation & Repair
30	Business Office Technology
25	Phlebotomy
23	Hospital Facilities Management

Top Career Clusters

The National Career Clusters Framework organizes CTE programs into 16 career clusters. The top career clusters by noncredit enrollment are health science and transportation, distribution and logistics.



Top Industries for Employment



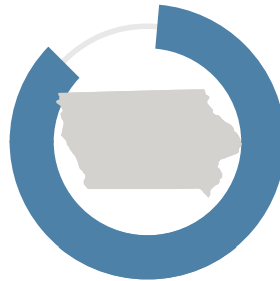
Of the noncredit students employed the year following program exit, over 70 percent work in the following top six industries:

Employment

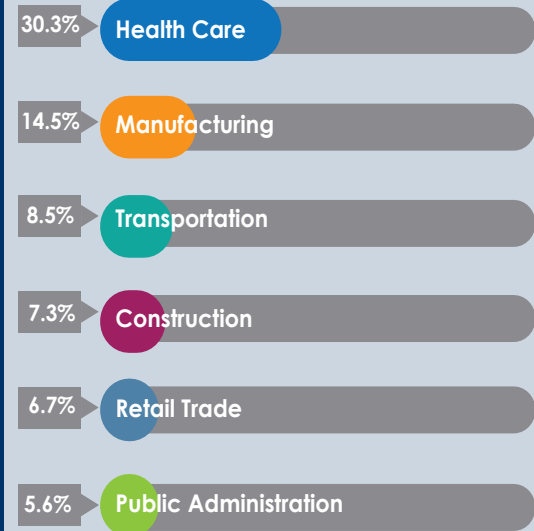
The majority of students in noncredit CTE programs stay in Iowa and are employed the first year following exit from their programs.



87.7% of noncredit students were employed in the first year following exit from their programs.



88.2% of noncredit students were employed in the state of Iowa.



Earnings

Earnings in the first year following program completion vary based on a variety of factors, including the number of contact hours required by the program, employer demand and whether or not the programs were for continuing education credits. The following examples provide median annual wages for in-demand occupations by number of required contact hours.

Medication Aide

\$29,716



32 to 99 Contact Hours

HVAC Installation/Repair

\$41,576



100 to 200 Contact Hours

Industrial Maintenance Technology

\$68,160



200+ Contact Hours

Read the full report and access the interactive dashboard:

Iowa Community Colleges Employment Outcomes: Noncredit Career and Technical Education Programs



COMMUNITY COLLEGES & WORKFORCE PREPARATION
PROSPERITY THROUGH EDUCATION

IOWA
WORKFORCE
DEVELOPMENT